

NOTICE: Important Installation Instruction

976-0457-01-01
Rev A

⚠ DANGER

RISK OF FIRE, ELECTRIC SHOCK, EXPLOSION, AND ARC FLASH

This Notice is in addition to, and incorporates by reference, the relevant product manual for Xantrex SOLAR MPPT Charge Controller. Before reviewing this Notice you must read the relevant product manuals. Unless specified, information on safety, specifications, installation, and operation is as shown in the primary documentation received with the product. Ensure you are familiar with that information before proceeding.

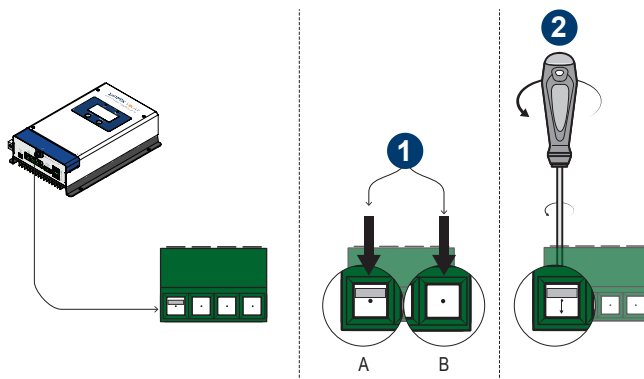
Failure to follow these instructions will result in death or serious injury.

The 30A MPPT Solar Charge Controller (12/24VDC) comes with two DC terminal blocks that securely fastens PV and battery DC cables into place. The DC terminal blocks make use of a screw-activated elevator clamping mechanism that is lowered when the screw head is turned counter-clockwise and raised when turned clockwise. See *Figure 1* for an illustration.

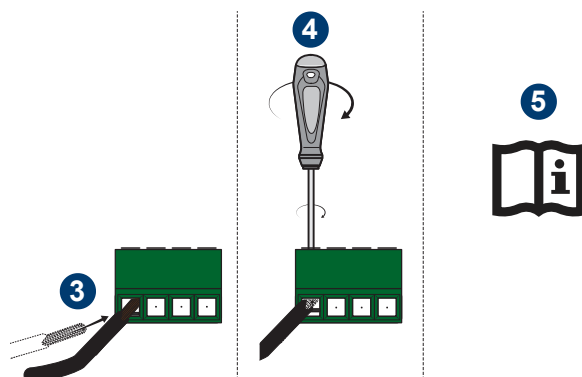
IMPORTANT:

- Use a Phillips screwdriver point size 1 to turn the screw head either counter-clockwise or clockwise.
- Do not apply any more torque when driving the screw head in either direction when you feel the turning has reached its stopping point.
- Always follow the installation instructions in the Owner's Guide.

Figure 1 DC terminal block (PV/Battery terminals shown)



1. Inspect the terminal entry. The clamp is elevated when its clamping bar is visible through the terminal entry (A). The clamp is lowered when its clamping bar is not visible and fully retracted (B).
2. If the clamp is elevated either partially or fully (A), lower the clamping bar by turning the screw counter-clockwise.
3. Insert a wire fully into the terminal entry.
4. Elevate the clamping bar by turning the screw clockwise fastening the wire securely in place.
5. Refer to the Owner's Guide for correct wire terminal locations and polarities.



Copyright © 2022 Xantrex LLC. All Rights Reserved. All trademarks are owned by Xantrex LLC and its affiliates.

Exclusion for Documentation

UNLESS SPECIFICALLY AGREED TO IN WRITING, SELLER

(A) MAKES NO WARRANTY AS TO THE ACCURACY, SUFFICIENCY OR SUITABILITY OF ANY TECHNICAL OR OTHER INFORMATION PROVIDED IN ITS MANUALS OR OTHER DOCUMENTATION;

(B) ASSUMES NO RESPONSIBILITY OR LIABILITY FOR LOSSES, DAMAGES, COSTS OR EXPENSES, WHETHER SPECIAL, DIRECT, INDIRECT, CONSEQUENTIAL OR INCIDENTAL, WHICH MIGHT ARISE OUT OF THE USE OF SUCH INFORMATION. THE USE OF ANY SUCH INFORMATION WILL BE ENTIRELY AT THE USER'S RISK; AND

(C) REMINDS YOU THAT IF THIS MANUAL IS IN ANY LANGUAGE OTHER THAN ENGLISH, ALTHOUGH STEPS HAVE BEEN TAKEN TO MAINTAIN THE ACCURACY OF THE TRANSLATION, THE ACCURACY CANNOT BE GUARANTEED. APPROVED CONTENT IS CONTAINED WITH THE ENGLISH LANGUAGE VERSION WHICH IS POSTED AT <http://www.xantrex.com>.

NOTE: Visit <http://www.xantrex.com> , click Products, select a Product category, select a Product, and search the Product Documents panel for a translation of the English guide, if available.

Document Number: 976-0457-01-01

Rev A

Date: September 2022

Contact Information

Telephone: +1-800-670-0707 / +1-408-987-6030

Email: customerservice@xantrex.com,
<http://www.xantrex.com/power-products-support/>

Web: <http://www.xantrex.com>